

Quick Start

SU/MU (AXX/BXX)



Configuration software compatibility

Windows ®		
7®	8®, 8.1®	10®
Windows® Touch function requires the relevant Windows® components present on the operating system		

Touch function is compatible with other OS, for the compatibility list go to
<http://support.visualplanet.biz/kb/touchfoil-compatibility>



For detailed integration documentation please contact your touchfoil™ supplier, your visualplanet™ account manager, or the visualplanet™ support team.

t +44(0)1223 202949

@ support@visualplanet.biz

w www.visualplanet.biz

Step 1

Download the touchfoil™ Configuration Software and guide documents from our web site
www.visualplanet.biz/support for the version of your touchfoil:

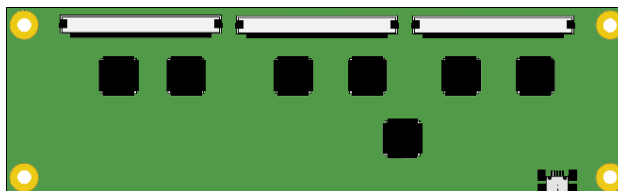
9279 (AXX)

Configuration software 



5+2 (BXX)

Configuration software 



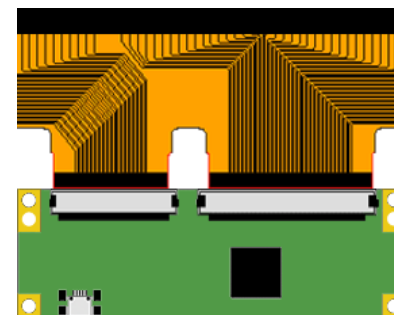
Before laminating the touchfoil please perform a pre-lamination integrity test as instructed in the guide.

Step 2

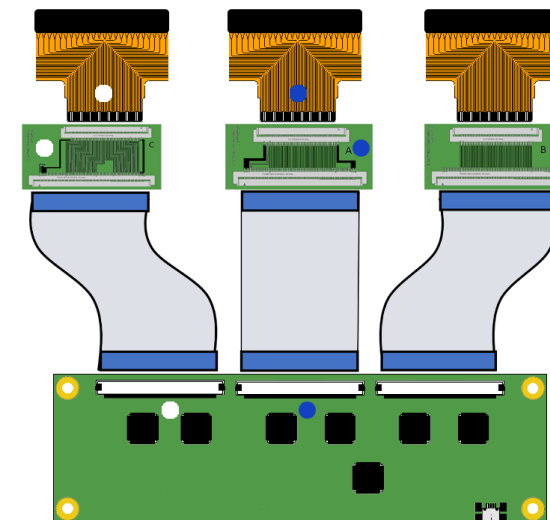
Connect the touchfoil to the controller board and then the controller board to the computer using the USB cable supplied.

Note: when fitting the controller board, the gold contacts on the FFC should be facing down.

AXX



BXX



Step 3

Attach the USB ground lead to a reliable earth.



Step 4

Run the touchfoil Configuration Software to test and calibrate your touchfoil.